



Partner for Choice. Partner for Results.

Independent Care Health Plan

**Governance Presentation to the
Milwaukee Consumer/Stakeholder
Advisory Council Meeting
October 16, 2008**





Partner for Choice. Partner for Results.

What is *iCare*?

- *iCare* is an insurer-coordinator of health care and human services for indigent adults, ages 19 years and older, with disabilities and special needs.





Partner for Choice. Partner for Results.

Governing Board

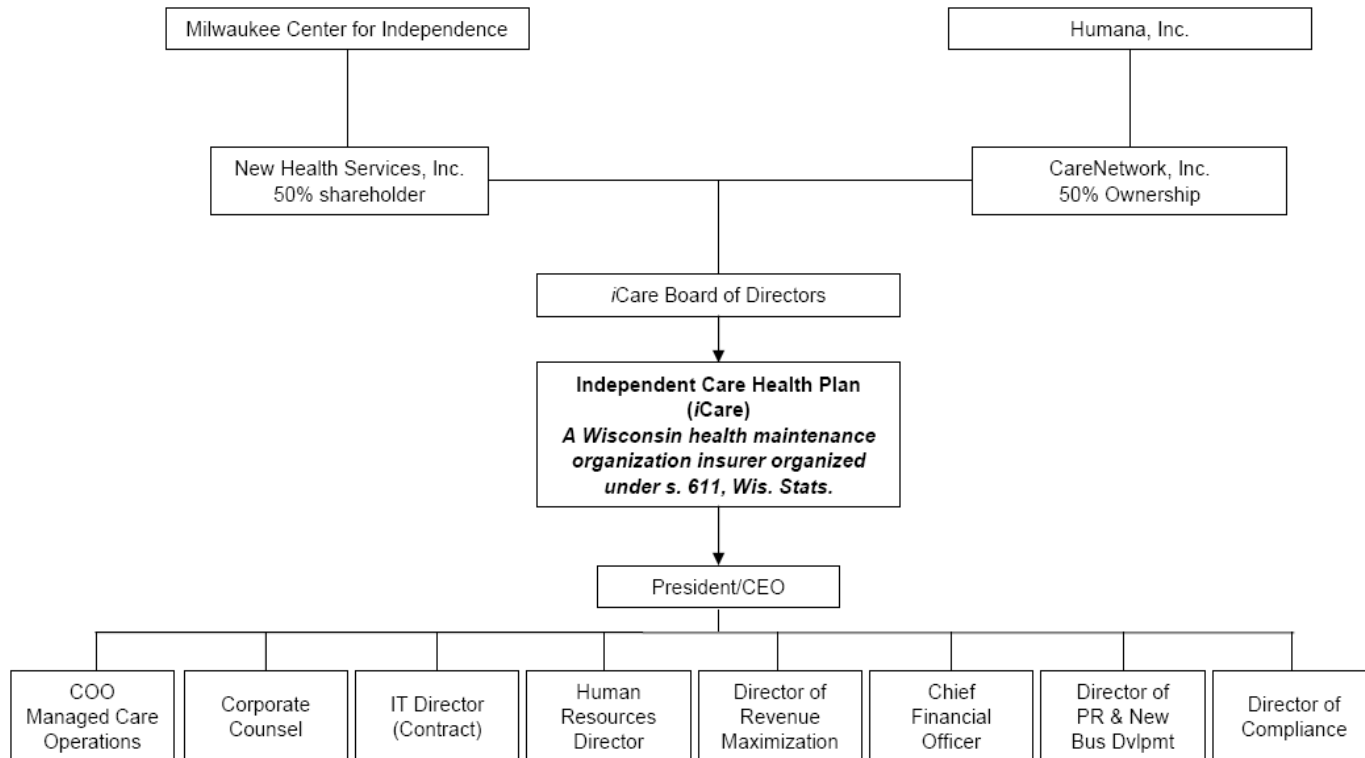
- Articles of incorporation and bylaws call for 7 Board Directors
 - 3 Directors appointed by Class A shareholders, New Health Services (MCFI)
 - 3 Directors appointed by Class B shareholders, CareNetwork (Humana)
 - One independent director not affiliated with either Class A or Class B shareholders
- Chairman, Dr. Howard Garber, Milwaukee Center for Independence
- Organized as Chapter 611 Wisconsin Insurance Corporation
- Substantially meets Family Care Statutory Requirements



Partner for Choice. Partner for Results.

Current Governance Structure

ORGANIZATION AS LICENSED UNDER STATE LAW





Partner for Choice. Partner for Results.

Organizational Accountability

- SSI managed care – DHS contract
- Medicare Dual Eligible SNP – CMS contract
- Family Care CMU – Milwaukee County Department on Aging
- All CMUs are reviewed by CMO Governing Board
- iCare coordinates benefits for all these contracts as some members are in multiple iCare plans





Partner for Choice. Partner for Results.

2009 Proposed Changes

- Recruit new CEO – Impacts Board composition
- Reviewing recommendations for changes needed prior to Contracts in 2010 for Family Care Partnership/Plus
 - CMS – Medicare Dual Eligible SNP specific to a companion Wisconsin DHS contract for Family Care
- Meet all certification requirements
- Report to Long Term Council or ADRC Governing Boards upon request from those bodies



Partner for Choice. Partner for Results.



Questions?